

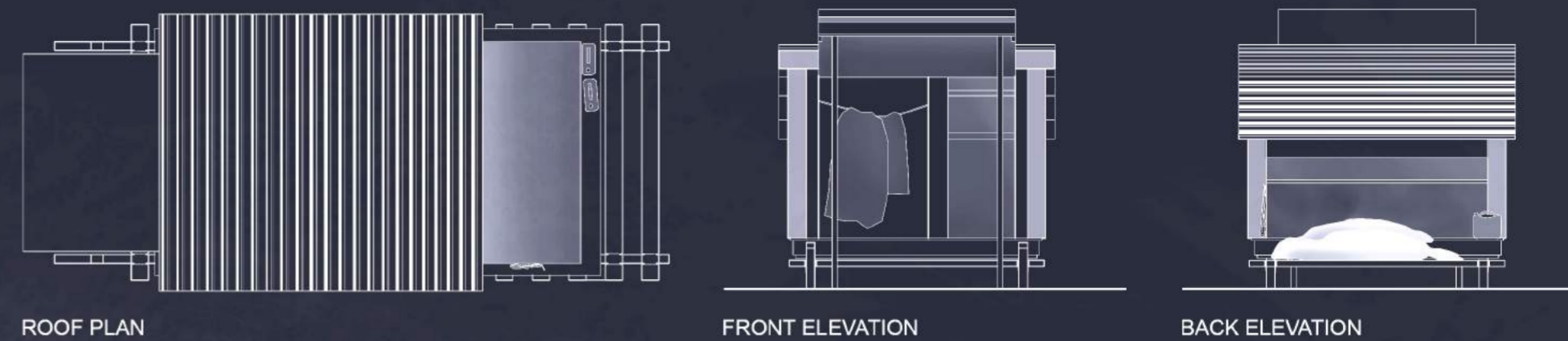
THE HUNT ᐱᕐᕐᕐᕐᕐᕐᕐᕐ

CHAR00022

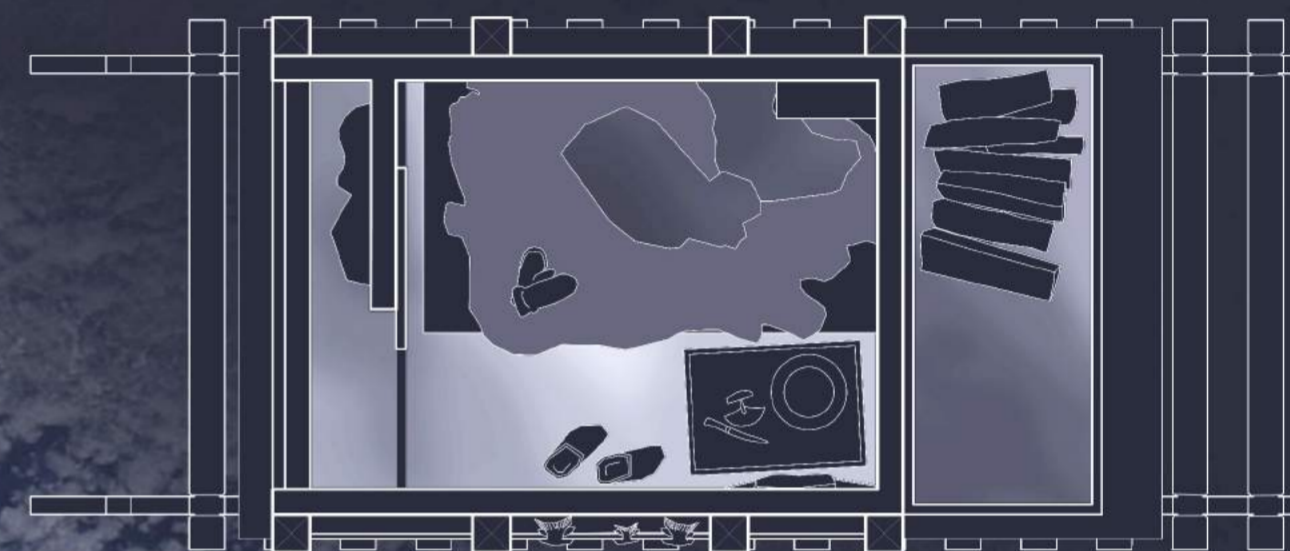
As the American culture influenced the land in Nunavik, the arrangement of villages became disengaged from the lifestyle of the Inuit communities. Nomadism is a way of life Inuit people identified with by constantly moving across their territory to scavenge for their basic needs. In contrast, American culture promotes sedentism leading society to a world of consumerism.

To connect the Inuit people back to their semi-nomadic lifestyle, portable shelters have been designed with the notion of temporary stay. The shape is inspired by the igloo, a symbol of protection. The use of strictly recycled materials and the ease to construct, are key ideas of these sliding homes making it as accessible as possible to the Inuit communities.

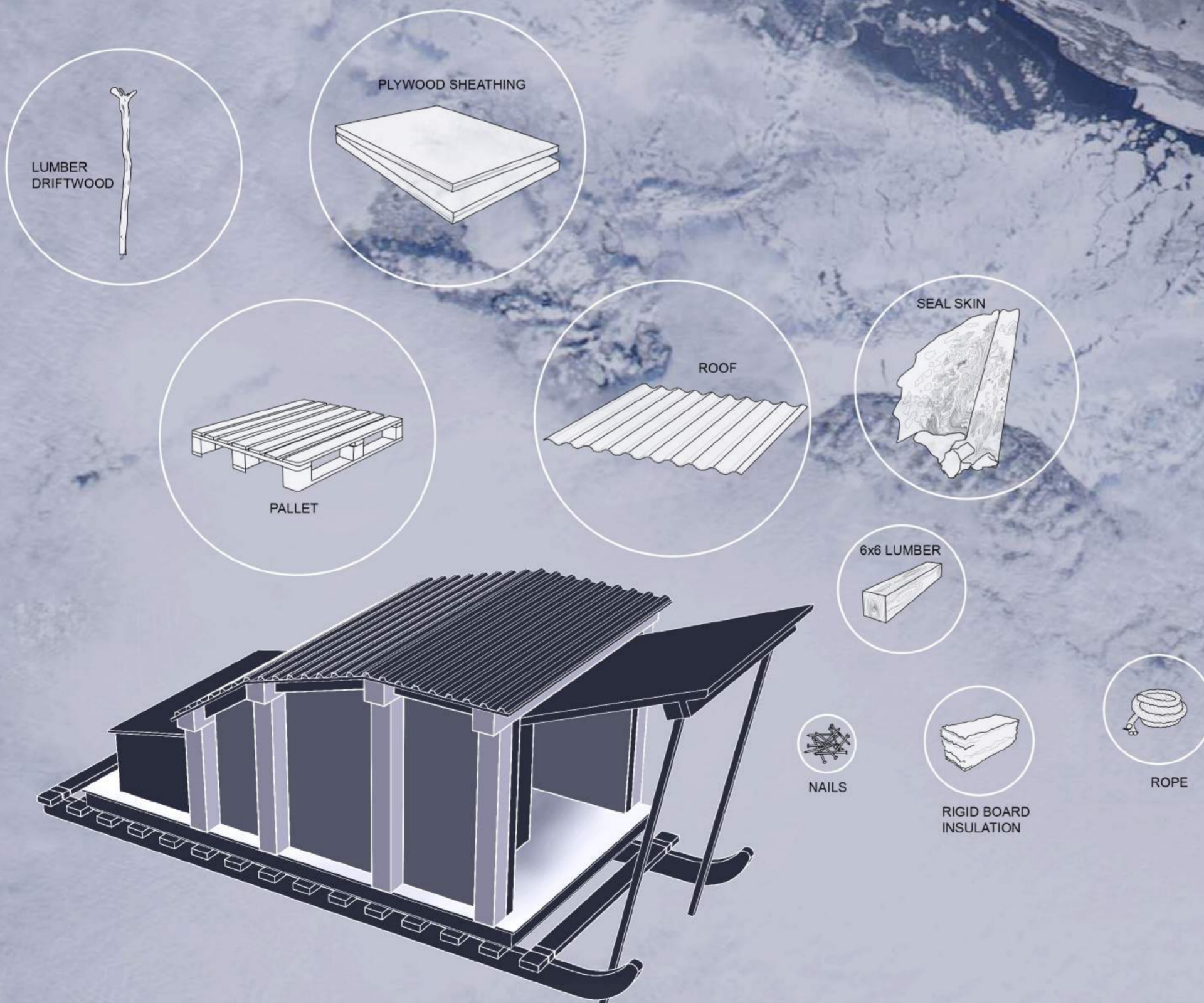
The shelters can be maneuvered to provide protection against the elements. Any number of them can be aligned by the hinged roof system creating a semi-enclosed space that increases in size as more shelters join. This bond encourages Inuits to have a temporary community on their hunting grounds, while travelling, and reviving their old nomadic way of life.



SCALE 1:50
0 20cm 1m



PLAN
SCALE 1:30
0 20cm 1m



HUNTING TOOLS

THE HUNTED

